

Electronic Mustering

Real-time data
& Reporting

Gangway &
Bridge Control

Support
Services

Management
& Reporting



Quayside Personnel Management

Supplied in a transportable kit form, the EPIC GMS (Gangway Management System) is an easily deployed electronic gangway monitoring system.

It is designed to replace dated and innaccurate T-Card systems at port and drydock facilities, providing increased accuracy and functionality.

Key Features

- *Real-Time accurate data*
- *Pre-Planning and ad-hoc personnel logistics*
- *Comprehensive view of competencies and certifications*
- *Increased safety awareness & compliance*
- *Effective managed emergency response*
- *Clear visibility of POB status*
- *Easy to use graphical interface*
- *Comprehensive real-time management reporting*

- Comprehensive personnel database, including: job title, company & certifications
- Increased efficiency through accurate record keeping
- 100% accurate recording of gangway movements
- Log inductions and certifications of workforce
- Real-time POB status reporting
- Quick personnel arrival processing
- Shift and workflow planning

After registering and completing any site inductions, an RFID card will be issued to personnel which will allow them to swipe in and out of the installation at the EPIC card scanners located near the gangway.

The IN/OUT card scanners are packaged within the GMS-CS unit which is easily deployed both internally and externally by the gangway. The GMS-CS contains a Red and Green traffic light to provide visual indication of whether the gangway is open or closed.

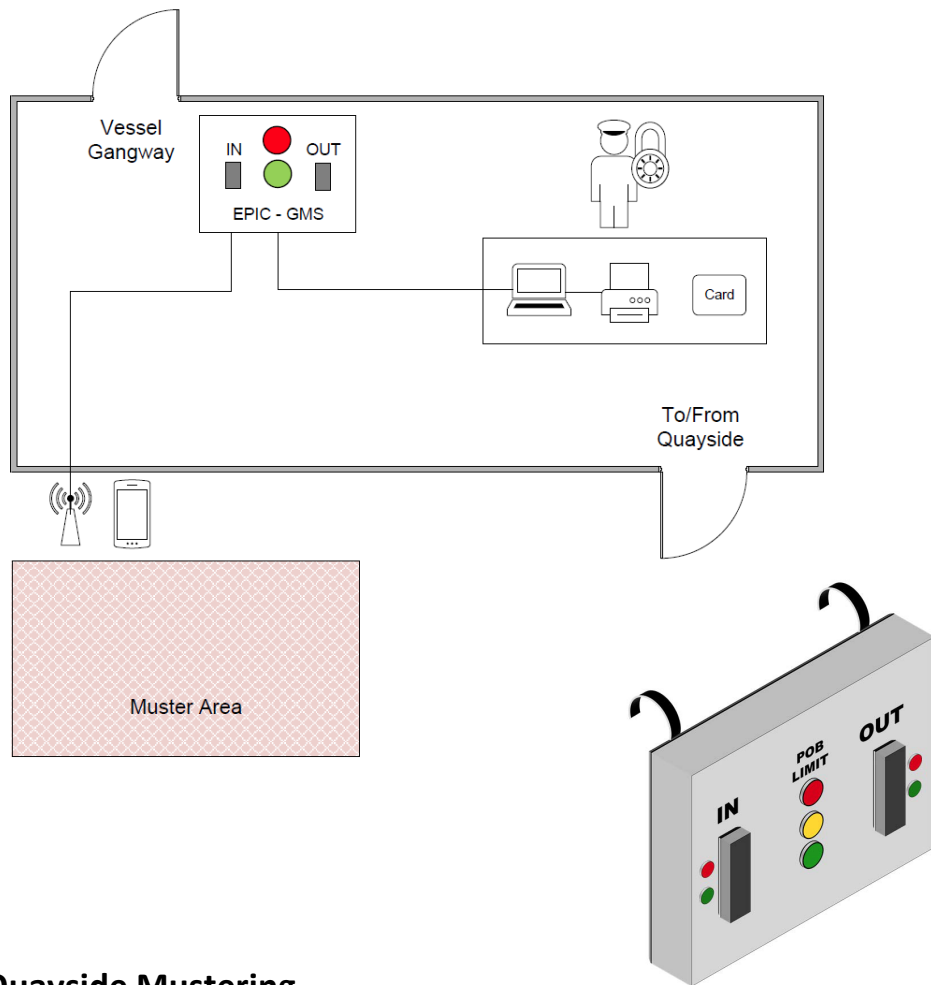
The GMS system provides 100% accurate real-time data on POB levels and allows users to search the database of personnel on site by name, job title or company and can provide a number of reports, providing increased levels of accuracy and functionality over a traditional paper based system.

Gangway Management System



The GMS Software includes a powerful reporting tool, designed to aid in the management of personnel movements to improve project efficiency.

These reports provide project management teams with the information needed to ensure the right skills are on board at the right time as per the project plan.



Quayside Mustering

The kit includes a Quayside Mustering function as standard to register people at the muster area located at the quayside. This eliminates the need for personnel to log out of the system via the GMS-CS Unit, instead personnel can proceed straight to the muster area - saving precious time in the event of an emergency and reducing bottlenecks.

The EPIC Laptop PC provides an interface to monitor the progress of a muster and quickly identify any personnel missing from the muster area and their last known location. This system has been proven in an offshore environment and can rapidly speed up search and rescue operations.